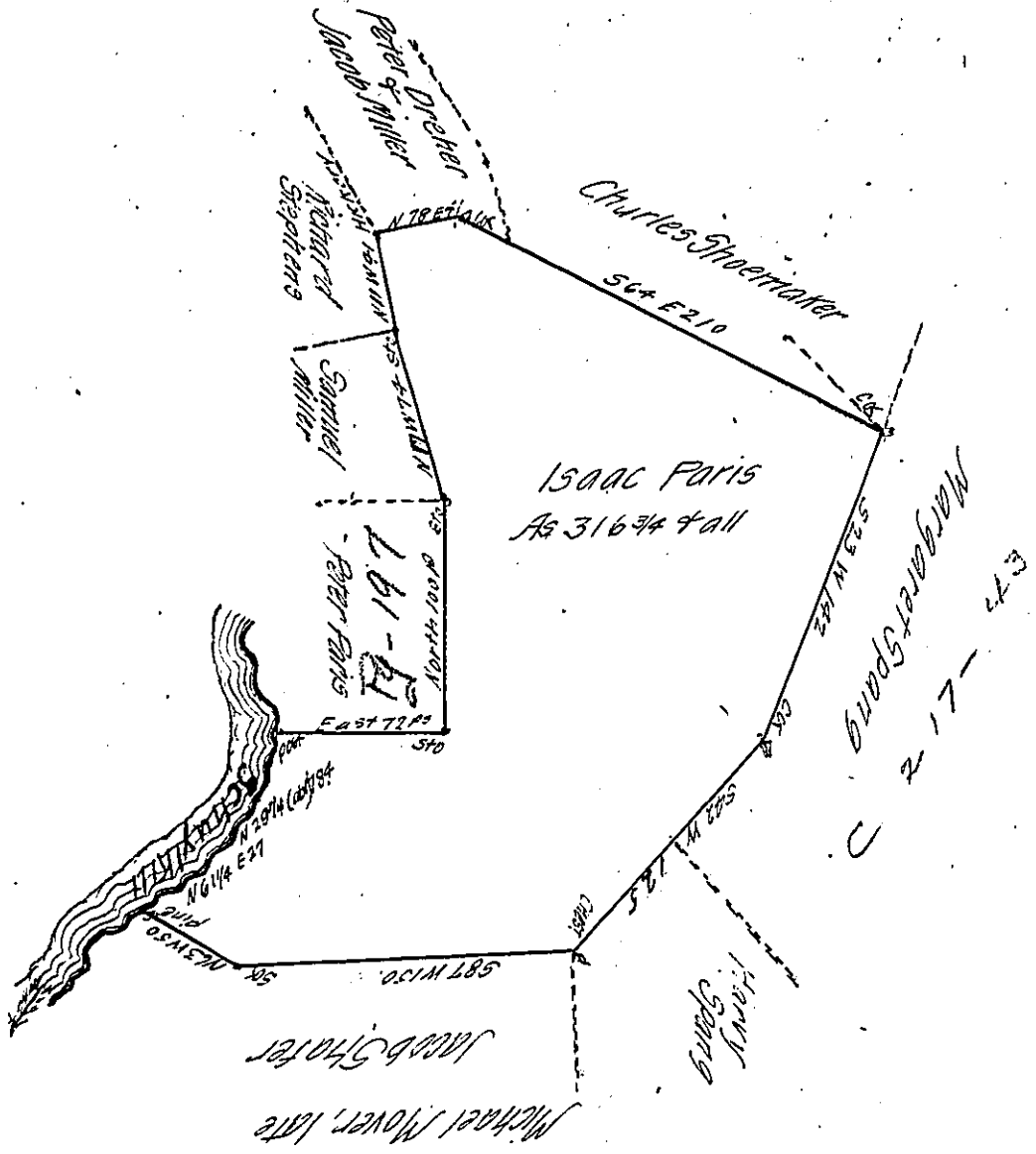


FORM No 1.



Situate (or) Brunswick township, Berks County (near Schuylkill)

Containing Three hundred and sixteen acres and three quarters and allowance of 6 Pct. Surveyed on an Application N<sup>o</sup> 3295 dated May 13<sup>th</sup> 1768. granted to Isaac Paris -

Gabriel Hiester Esquire } Surveyed Per Henry Vanderslice D.S.  
Surveyor General }

Copied from his works

April 28<sup>th</sup> 1830

Examined and approved Matthias S. Richards D.S.

May 12<sup>th</sup> 1830

F. L. Auderbrun  
Per Sur  
Schuylkill

IN TESTIMONY that the above is a copy of the original remaining on file in the Department of Internal Affairs of Pennsylvania, made conformably to an Act of Assembly approved the 16th day of February, 1833, I have hereunto set my Hand and caused the Seal of said Department to be affixed at Harrisburg, this fourteenth day of February 1907

Isaac R. Brown  
Secretary of Internal Affairs